

Extension Food Science Outreach Program

**240 Food Science Building
Corner of Cedar Street and East Campus Road
The University of Georgia
Athens, GA 30602-7610
phone (706) 542-2574 ~ fax (706) 542-9066**

Please note that we do not have public or visitor parking available at the Food Science Building at this time. You will need to park in the South Campus Parking Deck and walk about 4 blocks to the Food Science building (see attached map).

Driving Directions to the South Campus Parking Deck from the Athens Perimeter (Loop 10) (Blue Route on map): Exit Loop 10 at College Station Road and turn west (toward campus). Travel west on COLLEGE STATION ROAD until you reach the CSX Railroad crossing (3rd traffic light from Loop 10) at EAST CAMPUS ROAD.

Get into the right-hand lane and turn north (right) on EAST CAMPUS ROAD. Get in left lane to turn west (left) onto CARLTON STREET at the first traffic light. Continue on Carlton Street until you pass STEGEMAN COLISEUM on your left. At the next light (Sanford) turn right (northeast) behind the Georgia Center for Continuing Education. The South Campus Parking Deck entrance (green square on map) is the next building on your left (west). **Parking is \$8 per day – get a voucher from Marian at the EFS office.**

Driving Directions from Holiday Inn Express to the South Campus Parking Deck: Exit parking lot at Holiday Inn Express onto West Broad Street going toward downtown (right or east). Proceed up the hill through two traffic lights to the intersection with LUMPKIN STREET. Turn south (right) on Lumpkin Street and go to the top of the next hill. If you pass the Georgia Center for Continuing Education on the corner of Carlton and Lumpkin, you've gone too far. Enter the parking deck and park at the far end near the Field Street exit and walk to the Food Science Building. **Parking is \$8 per day.**

Walking Directions from the South Campus Parking Deck (next to the Georgia Center for Continuing Education) to the Food Science Building on Cedar Street (Red Route on map):

As you exit the east entrance to the South Campus Parking Deck, turn left and go two blocks north on SANFORD DRIVE. Watch for SNELLING DINING HALL (red brick building across the street, light blue square on map) - that's where you'll have lunch while you're attending our course.

Turn right (east) just past the SCIENCE LIBRARY/BOYD GRADUATE STUDIES buildings and follow the sidewalk east to D.W. BROOKS DRIVE. Cross D.W. Brooks Drive and turn left (north) on D.W. Brooks Drive until you pass BARROW HALL and turn right onto the sidewalk.

Follow the sidewalk around Barrow until you get to CEDAR STREET. The new FOOD SCIENCE ADDITION (royal blue square on map) is across Cedar Street next to the Poultry Science building.

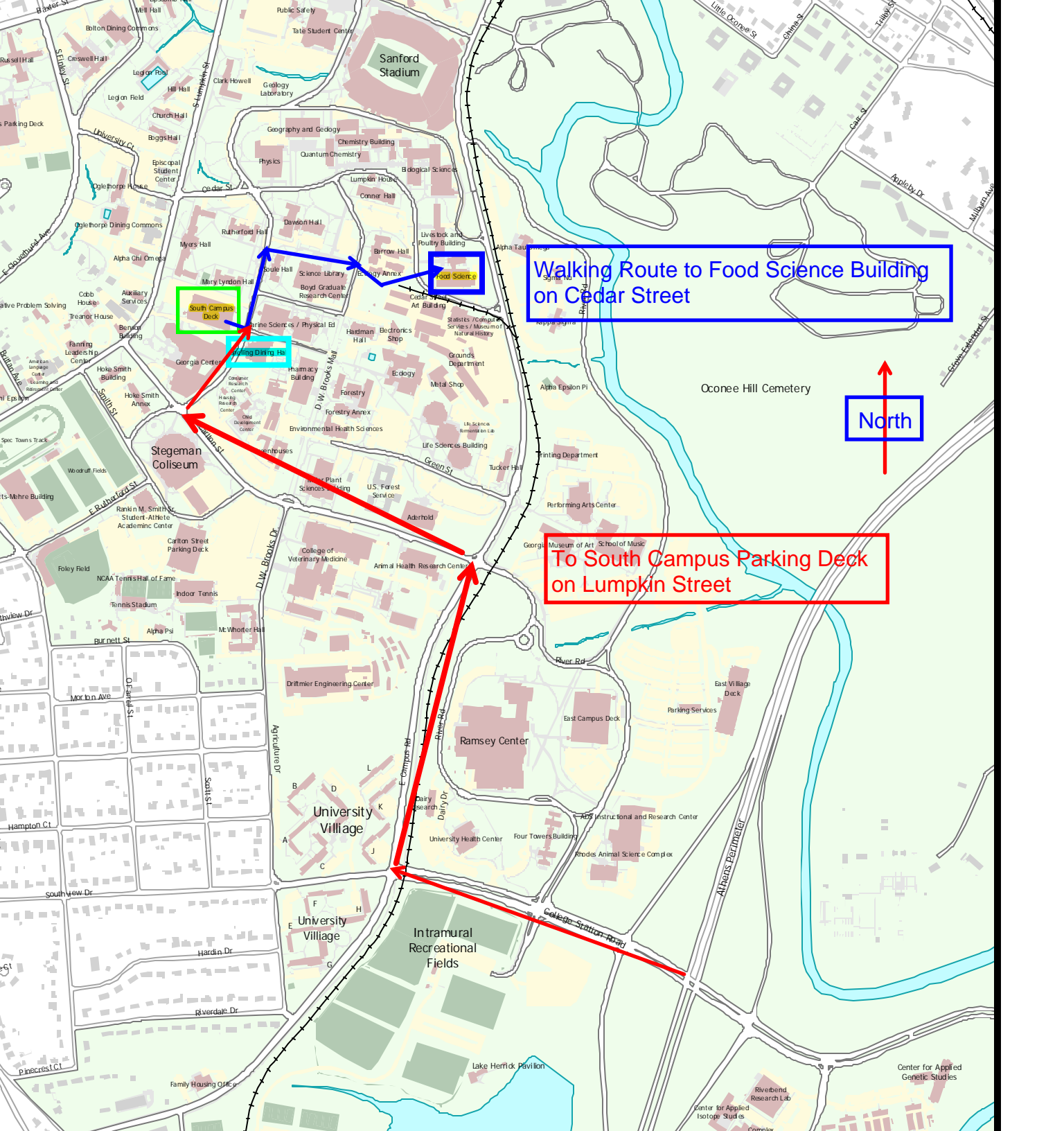
Enter through the glass double doors and sign in. The Extension office is the first suite on the left.

We appreciate your attendance and interest in our workshops.

The UGA Extension Food Science Outreach Program



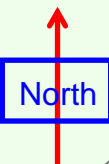
The new Food Science addition is the location for many Extension Food Science workshops and short courses.



Walking Route to Food Science Building on Cedar Street

South Campus Deck

Food Science



To South Campus Parking Deck on Lumpkin Street

Stegeman Coliseum

University Village

University Village

Intramural Recreational Fields

Ramsey Center

Oconee Hill Cemetery

Lake Herrick Pavilion

Riveland Research Lab

Center for Applied Genetic Studies